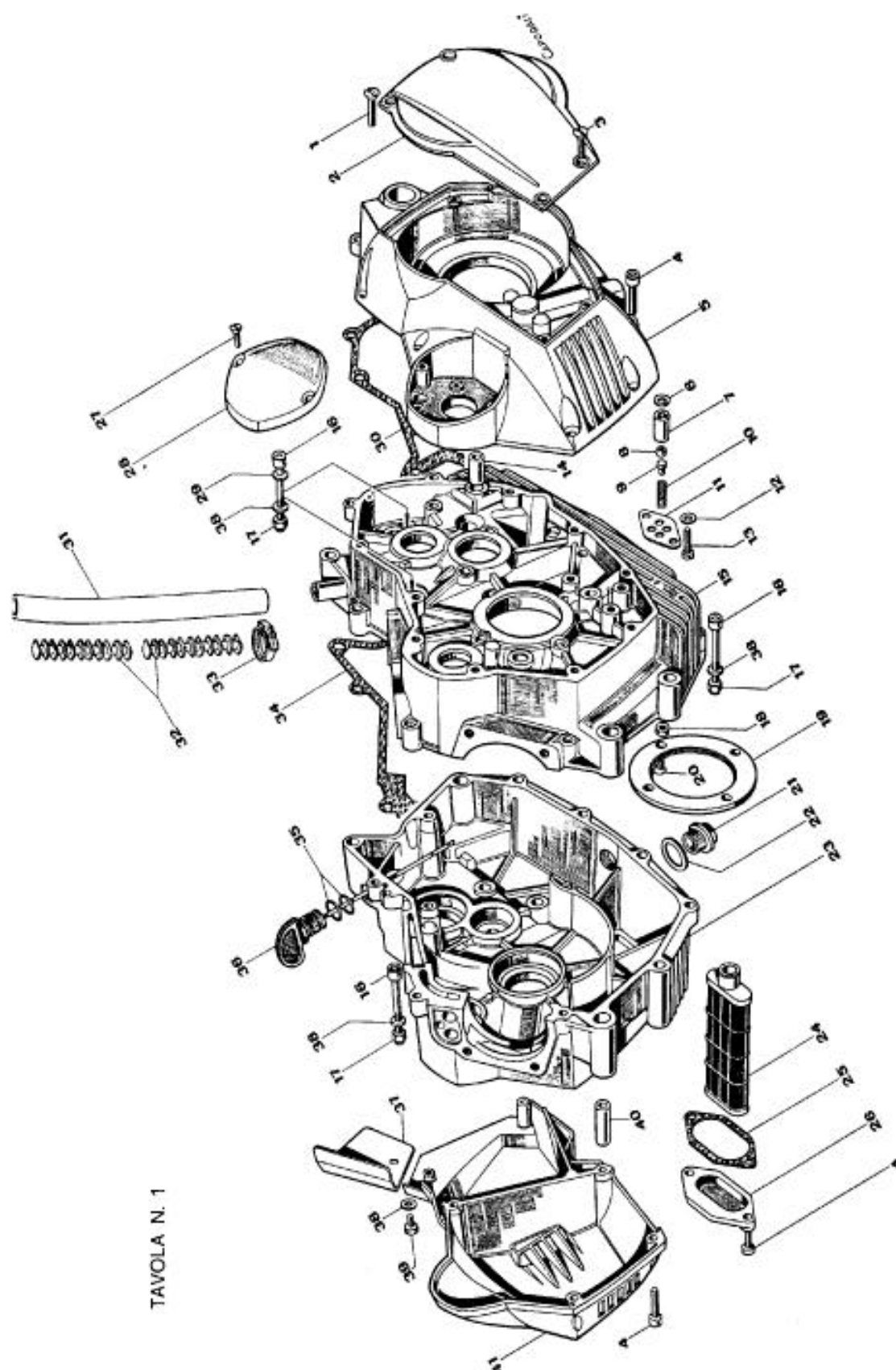


**Table 1: Crankcase**

No.	Code	Denominazione	Description
1	47.04.11	Vite TSC $\phi 5 \times 20$	Screw - TSC - $\phi 5 \times 20$
2	11.02.13	Coperchio ispez. frizione	Cover - Clutch inspection
3	47.04.09	Vite TSC $\phi 5 \times 16$	Screw - TSC - $\phi 5 \times 16$
4	47.06.05	Vite TCCE $\phi 6 \times 20$	Screw - TCCE - $\phi 6 \times 20$
5	11.02.10	Coperchio frizione	Cover - Clutch
6	13.04.09	Sede sfera	Seat - Ball
7	12.04.05	Canotto	Quill
8	24.03.06	Sfera r 8 mm.	Ball - 8 mm r.
9	13.04.08	Portamolla	Spring-Holder
10	22.01.38	Molla	Spring
11	15.05.05	Piestrina	Plate
12	47.07.02	Rondella $\phi 5 \times 11$	Washer - $\phi 5 \times 11$
13	47.02.19	Vite TC $\phi 5 \times 16$	Screw - TC - $\phi 5 \times 16$
14	13.04.02	Boccola riferimento	Locating bush
15	11.01.07	Semicarter sinistro	Half-case, left
16	47.06.03	Vite TCCE $\phi 6 \times 45$	Screw - TCCE - $\phi 6 \times 45$
17	47.03.13	Dado $6 \times 7,6$	Nut $6 \times 7,6$
18	47.03.04	Dado $6 \times 5$	Nut $6 \times 5$
19	15.05.01	Flangia	Flange
20	47.04.08	Vite TSCE $\phi 6 \times 22$	Screw - TSCE - $\phi 6 \times 22$
21	12.04.06	Tappo	Plug
22	21.01.62	Guarnizione	Gasket
23	11.01.08	Semicarter destro	Half-case, right
24	32.01.16	Filtro olio	Oil filter
25	21.01.63	Guarnizione	Gasket
26	11.02.15	Coperchio filtro olio	Cover - oil filter
27	47.04.10	Vite TS $\phi 4 \times 25$	Screw - TS - $\phi 4 \times 25$
28	11.02.14	Coperchietto rottore	Contact breaker cover
29	21.01.53	Rondella rame	Copper washer
30	21.01.58	Guarnizione cop. sin.	Gasket left cover
31	14.07.11	Tubo sfiato carter	Pipe - Case breather
32	32.01.11	Labirinto sfiatatoio	Breather - labyrinth
33	26.01.15	Fascetta	Ring
34	21.01.57	Guarnizione centrale	Gasket - central
35	23.02.14	OR 119	OR 119
36	31.01.04	Asta livello olio	Dip stick
37	37.03.10	Carterino	Small case
38	47.07.03	Rondella $6 \times 13$	Washer - $6 \times 13$
39	47.01.37	Vite TE $\phi 6 \times 10$	Screw - TE - $\phi 6 \times 10$
40	13.04.01	Boccola riferimento	Locating bush
41	11.02.11	Coperchio lato volano	Cover - flywheel side